

Greeley

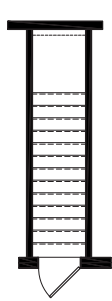
Cabin Series

Factory Expo

"Factory Direct Value" HOME CENTERS

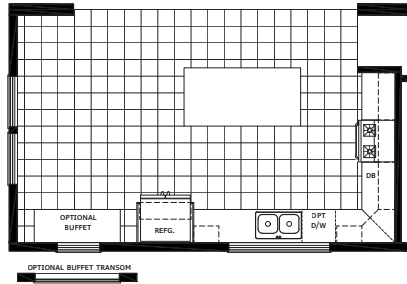
3 Bedrooms, 2 Baths
Approx. 1,624 Sq. Ft

Last Updated: 11-8-18



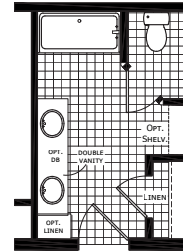
OPT. BASEMENT ACCESS

(NOTE: FOR MOD ONLY, WINDOWS WITH DORMER TO BE RE-CENTERED IN SPACE)

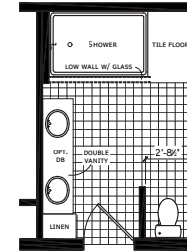


STD. KITCHEN

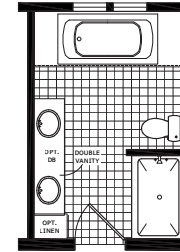
"A" SIDE



OPT. MASTER BATH A



OPT. MASTER BATH B



OPT. MASTER BATH C

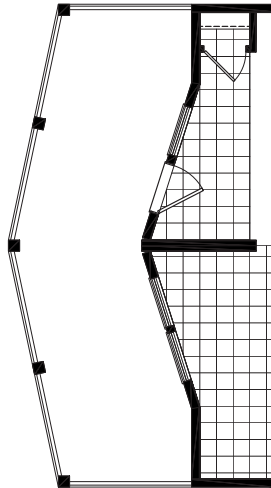
56'-0"

"D" SIDE

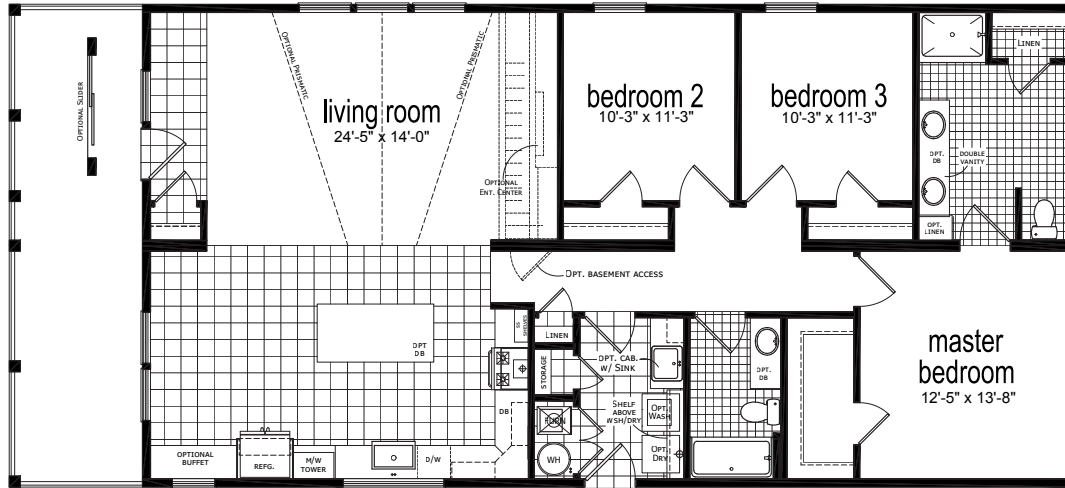


OPT. ENTERT. CENTER

(NOTE: WINDOWS WITH DORMER TO BE RE-CENTERED IN SPACE)



OPT. 8' PROW PORCH

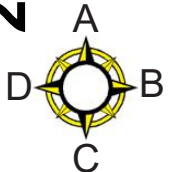


"C" SIDE

"B" SIDE

29'-0"

NOTE: PLANS SHOWN W/ OPTIONAL UK3 KITCHEN



3200 Enterprise Ave.
York, NE 68467

For Detailed Directions See Map On Our Website

I authorize Factory Expo Homes to build my house, per this plan.

X _____
Customer Signature/Date

1-800-504-3219 www.ExpoMobileHomes.com 1-800-504-3219 www.ExpoMobileHomes.com

Important: Due to our policy of continuing improvement, all information in our brochures may vary from actual home. The right is reserved to make changes at any time, without notice or obligation, in colors, materials, specifications, processes, and models. All dimensions and square footage calculations are nominal and approximate figures. Please check with your sales person for specific and current information.